

DG6-310 (6V310Ah)



Specification

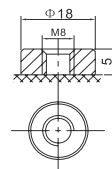
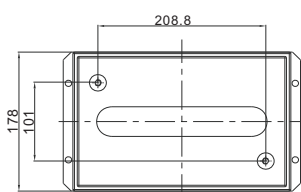
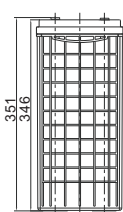
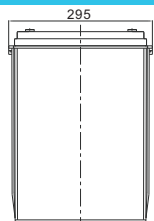
Cells Per Unit	3
Voltage Per Unit	6
Capacity	310Ah@20hr-rate to 1.75V per cell @25°C
Weight	Approx. 44.5 Kg (Tolerance ±3.0%)
Internal Resistance	Approx. 2.1 mΩ
Terminal	F14(M8)
Max. Discharge Current	3100A (5 sec)
Design Life	15 years (floating charge)
Max. Charging Current	62.0 A
Reference Capacity	C3 211.5AH C5 238.5AH C10 273.0AH C20 310.0AH
Float Charging Voltage	6.80 V~6.90 V @ 25°C Temperature Compensation: -3mV/°C/Cell
Cycle Use Voltage	7.10 V~7.20 V @ 25°C Temperature Compensation: -4mV/°C/Cell
Operating Temperature Range	Discharge: -40°C~60°C Charge: -20°C~50°C Storage: -40°C~60°C
Normal Operating Temperature Range	25°C ±5°C
Self Discharge	RITAR Valve Regulated Lead Acid (VRLA) batteries can be stored for up to 6 months at 25°C, and then recharging is recommended. Monthly Self-discharge ratio is less than 2% at 20°C. Please charged batteries before using.
Container Material	A.B.S. UL94-HB, UL94-V0 Optional.



DG (Deep Cycle GEL) series is pure GEL battery with 15 years floating design life, it is ideal for standby or frequent cyclic discharge applications under extreme environments. By using strong grids, high purity lead and patented GEL electrolyte, the DG series offers excellent recovery capability after deep discharge under frequent cyclic discharge use, and it can offers 2 times cyclic life than the standard series. It is suitable for solar & wind system, marine, deep discharge UPS etc.



Dimensions



Length	295±2mm (11.6 inches)
Width	178±2mm (7.01 inches)
Height	346±2mm (13.6 inches)
Total Height	364±2mm (14.3 inches)
Terminal	Value
M5	6~7 N*m
M6	8~10 N*m
M8	10~12 N*m

F14 TERMINAL

Unit:mm

Constant Current Discharge Characteristics : A(25°C)

F.V/Time	15MIN	30MIN	1HR	2HR	3HR	4HR	5HR	8HR	10HR	20HR
1.60V	391.0	264.7	168.3	102.9	77.1	61.5	51.6	34.9	28.8	16.1
1.65V	373.8	254.1	162.6	99.6	74.7	59.9	50.3	34.5	28.4	15.9
1.70V	350.1	242.9	157.3	96.3	72.7	58.2	49.0	34.0	28.0	15.7
1.75V	325.8	232.1	151.5	92.9	70.5	56.7	47.7	33.5	27.6	15.5
1.80V	300.9	221.9	145.7	89.6	68.4	55.1	46.5	32.9	27.3	15.3
1.85V	249.7	191.1	130.7	82.1	63.2	51.2	43.4	30.9	25.7	14.6

Constant Power Discharge Characteristics : WPC(25°C)

F.V/Time	15MIN	30MIN	1HR	2HR	3HR	4HR	5HR	8HR	10HR	20HR
1.60V	776.8	546.3	359.5	221.5	167.4	134.2	113.1	77.4	64.3	36.1
1.65V	746.6	528.9	349.7	215.5	163.3	131.1	110.6	76.6	63.5	35.6
1.70V	716.4	511.6	339.9	209.6	159.2	128.0	108.0	75.7	62.7	35.2
1.75V	676.4	494.0	329.5	203.2	155.1	125.2	105.7	74.8	62.0	34.8
1.80V	633.4	477.0	318.7	196.9	150.9	122.0	103.3	73.7	61.3	34.5
1.85V	533.1	414.9	287.6	181.4	140.1	113.9	96.7	69.4	57.7	32.8

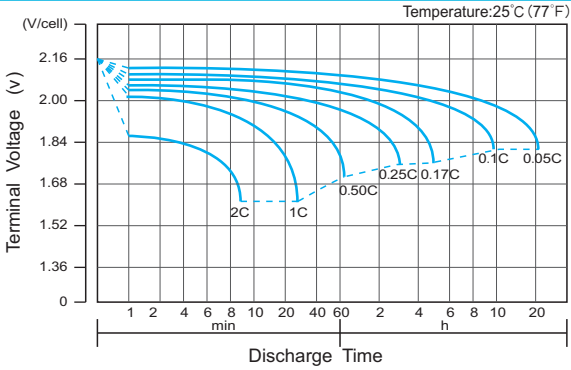
(Note) The above characteristics data are average values obtained within three charge/discharge cycle not the minimum values.

The battery must be fully charged before the capacity test. The C20 should reach 95% after the first cycle and 100% after the third cycle.

DG6-310(6V310Ah)



Discharge Characteristics Curve



Charge Characteristic Curve for Cycle Use(IU)



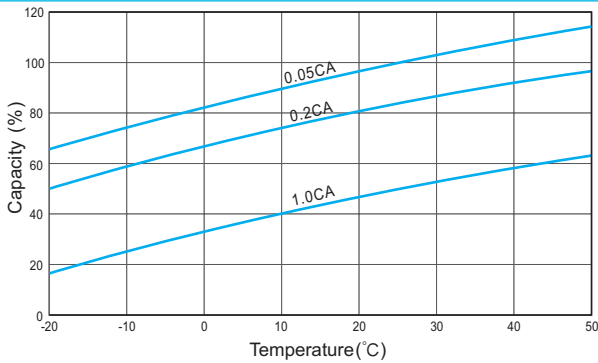
Cycle Life in Relation to Depth of Discharge



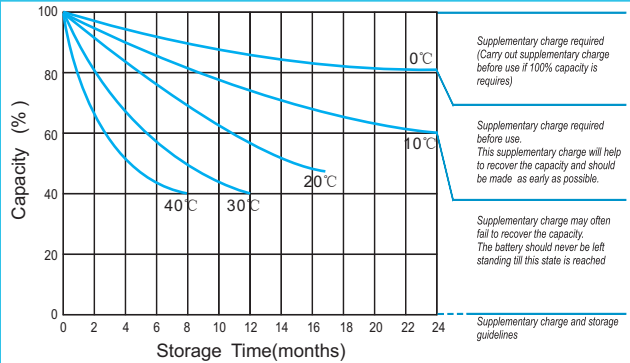
Relationship Between Charging Voltage and Temperature



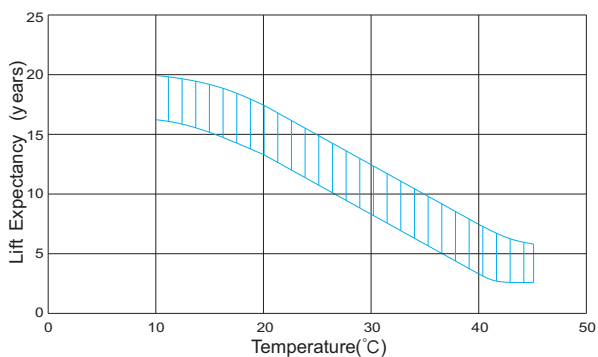
Temperature Effects on Capacity



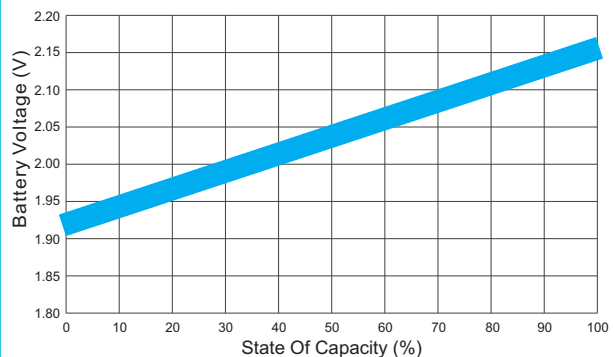
Storage Characteristics



Effect of Temperature on Long Term Life



Relationship of OCV And State of Charge(20°C)



(Note) All above information shall be changed without prior notice, Ritar reserves the right to explain and update the latest information.